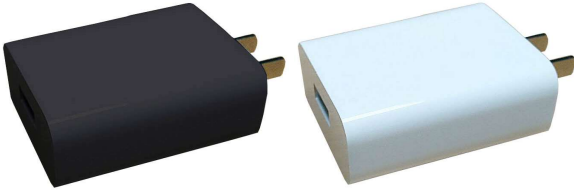


18W Fixed Pin Quick Charge 2.0 Adapter



Meic Quick Charge 2.0(QC 2.0) adapters are tested and certified to Quick Charge 2.0(QC2.0) standard. This new Product supports automatic sensing and switching between 3 output voltage (5V,9V,12V) to power the QC 2.0-enabled mobile devices. It shortens the charging time by up to 75% and with efficiency significant above DoE level VI requirement, marking your mobile device battery charging task an easy and joyful experience. Meic is certainly your top choice for QC 2.0 adapters and alike. This adapter comes in CCC Pins.

■ FEATURES

Efficiency	DoE Level VI & Coc V5 Tier 2
No Load Input Power	<75mW@ 115V/60HZ &230V 50HZ
Protection	OCP, OVP,SCP
Insulation Resistance	Primary to Secondary>10M,500Vdc
Dielectric Withstand Voltage	3000Vac,10mA for 1min.
OVP	7.85V,14.5V,19.7V
OCP,SCP	Auto recovery, 4A max
Efficiency	79% Min
Efficiency@10%output	69.73% Min
AC Plug	CCC
Weight	50.5(g)

■ Electrical Specifications

Input Voltage	100~240Vac(90~264Vac min/max)
Frequency	50/60HZ Nom (47~63Hz min/max)
Input Current	0.5A(RMS) max
Output Voltage	5V,9V,12V
Output Current	2A/2A/1.5A
Maximum Output Power	18W
Output Ripple & Noise	180mV(pk-pk) @25°C and 115&230Vac
AC Inrush Current	<40A max@115Vac and <60A max@230Vac
Over-shoot	10%
Hold-up Time	>10ms typ@115Vac/60HZ and rated load
Turn-On Delay Time	<3 sec at 90V/60HZ
Rise/Fall Time	< 50mS at 115Vac/60HZ

■ Environmental Specifications

Operating Temperature	-5°C ~ 45°C
Storage Temperature	-20°C ~85°C
Humidity, Operation	10~90% RH
Humidity, Storage	5~90% RH
MTBF(MIL-HDBK-217F)	100K hrs min.at 240Vac,rated load 25°C

■ Safety and Compliance

Safety Requirement	UL/CUL/CE/CB/CCC/PSE
EMI Requirement	EN55022 Class B & FCC Class B
Immunity requirement	
ESD test	EN61000-4-2.Contact:±8KV Air :±15KV
RS test	EN61000-4-3. 3V/m
EFT test	EN61000-4-4. 1KV
DIP test	EN61000-4-11. Level 3
Surge test	EN61000-4-5 Line to Line:1KV Line or Neutral to PE: 2KV

■ Dimensions: mm

